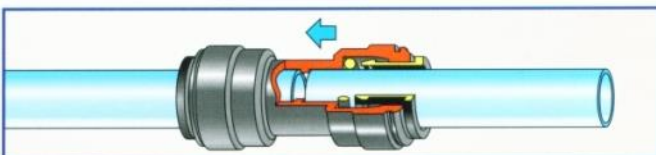


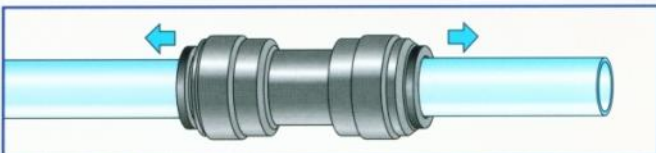
Home Master® Series Reverse Osmosis System Filter Change Instructions

Insert tube Push up to tube stop



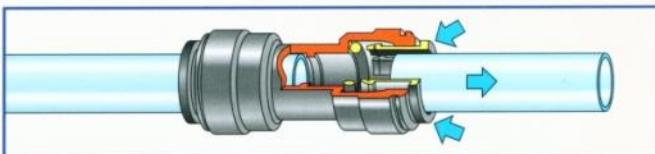
Push the tube into the fitting, to the tube stop. The collet (gripper) has stainless steel teeth which hold the tube firmly in position while the 'O' ring provides a permanent leak proof seal.

Pull to check secure



Pull on the tube to check that it is secure. It is a good practice to test the system prior to leaving site and/or before use.

Push in collet and remove tube



To disconnect, ensure the system is depressurized before removing the tube. Push in collet squarely against face of fitting. With the collet held in this position, the tube can be removed.

Home Master® Series Reverse Osmosis System Filter Change Instructions

Tools Required

Tube cutter or Scissors

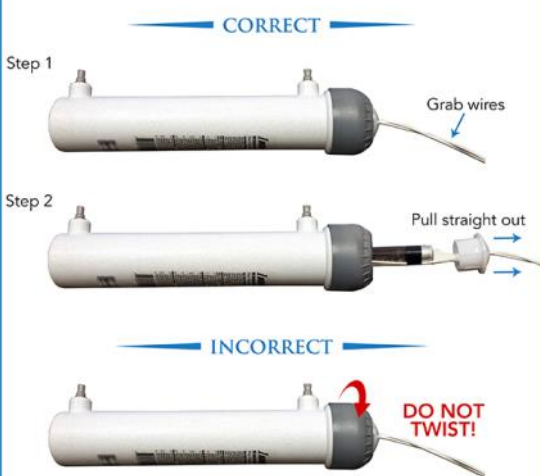
Towel and/or Paper Towels

1. Clear away a workspace under the sink near the location of the Home Master RO System.
2. Close the water valve feeding the Home Master RO, by either closing the Home Master ball valve located on the cold water line, or alternatively, by closing your angle-stop feed water valve clockwise. If present, close the inline ball valve feeding refrigerator/icemaker. For models UV, ULTRA or HydroPerfection—disconnect power adapter.
3. Close the reserve tank valve located on top of the reserve tank. When closed the blue handle will be perpendicular to the water line.
4. Depressurize the system. Flip up the handle on the RO faucet so that it locks into place, and dispenses water until it no longer flows. The water flow should fall off and stop in seconds. If water still continues to flow, repeat steps 2 & 3. The system is now depressurized; continue to leave to RO faucet in the open position.
5. Slowly and gently pull the Home Master RO off of its mounting clips from the bottom up. Lay it on a towel. Pull off the first filter to be changed—typically the sediment filter at the system inlet. **IMPORTANT:** Make a note of flow direction arrows on the filters or take a picture to maintain consistent flow. Please

service one filter at a time.

6. To remove the tubing from the filter – push down collet ring to the filter body with the thumb and forefinger while simultaneously pulling on the tubing as shown on cover figure. Some mild resistance to pulling out the tubing is normal. Removing the tubing will be impossible without first fully depressurized the Home Master RO as described in step 4. Immediately trim off a ¼” from the end of the tubing with the scissors. Make sure tubing end is smooth and round before inserting it into the replacement filter. NOTE: A rough or oblong tube end will leak.
7. Insert the tube end about a ¼” into the replacement filter fitting then pull back gently to ensure a snug fit. Repeat step 6 for the other end of the filter. Discard used filter. **Repeat step 6 for each of the next replacement filters and LED UV module** if present. For **older** generation UV bulb—See image below
8. Remount the Home Master RO. For models ULTRA and HydroPerfection reconnect power adapter. Dry any excess water at the fittings with a paper towel.
9. **SLOWLY** open the main water line to the Home Master RO. In 2 –20 minutes water

UV FILTER BULB REPLACEMENT



should flow from the RO faucet in a trickle. Initial discharge may be accompanied by a harmless discoloration due to loose carbon.

10. After the trickle runs clear, close the lever on the RO faucet and allow the system to pressurize. When the system has pressurized fully it will shut off automatically, usually in a few minutes.
(IMPORTANT STEP) dry unit thoroughly again, gently tug on each connection, and check for leaks. Then open the reserve tank valve slowly. Allow reserve tank to fill until full, which may take up to 3 hours.
11. When the tank has filled completely, and the system shuts-off automatically, then close feed valve and open RO faucet to allow the water to drain out until it comes to a complete stop. Then reopen feed valve and allow system to refill again. A further tank flush may be necessary depending on initial tank fill level. Finally, if present, open the inline ball valve feeding the refrigerator/icemaker.

System schematics available upon request

VIDEO INSTRUCTIONS:

www.ThePerfectWater.com



Perfect Water Technologies, Inc.
Copyright © 2024
Version 10